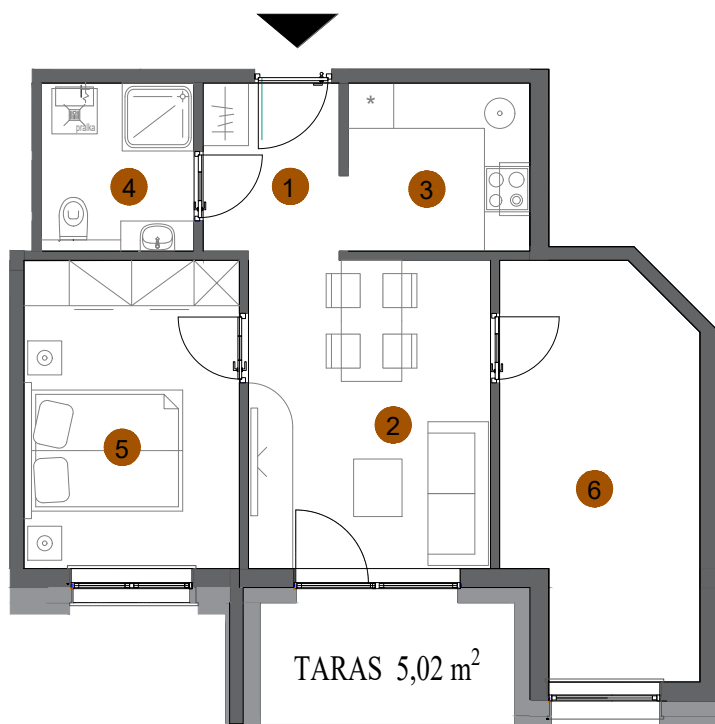
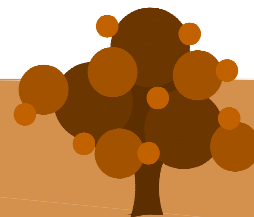


DĘBOWA PARK



MIESZKANIE 4/B

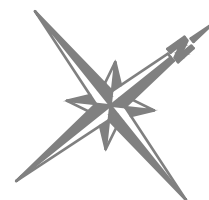
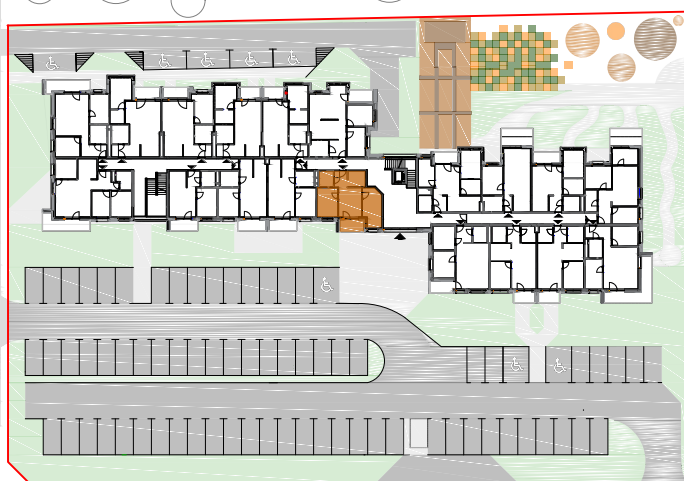
I PIĘTRO

2 POKOJE

51,84 m²

| | | |
|---|--------------------------------|----------------------|
| 1 | KOMUNIKACJA | 4,01 m ² |
| 2 | POKÓJ DZIENNY | 13,04 m ² |
| 3 | KUCHNIA | 5,34 m ² |
| 4 | ŁAZIENKA | 4,49 m ² |
| 5 | SYPIALNIA | 11,61 m ² |
| 6 | POM. POMOCNICZE - GARDEROBA | 13,35 m ² |

RZUT MIESZKANIA



SZKIC LOKALIZACYJNY